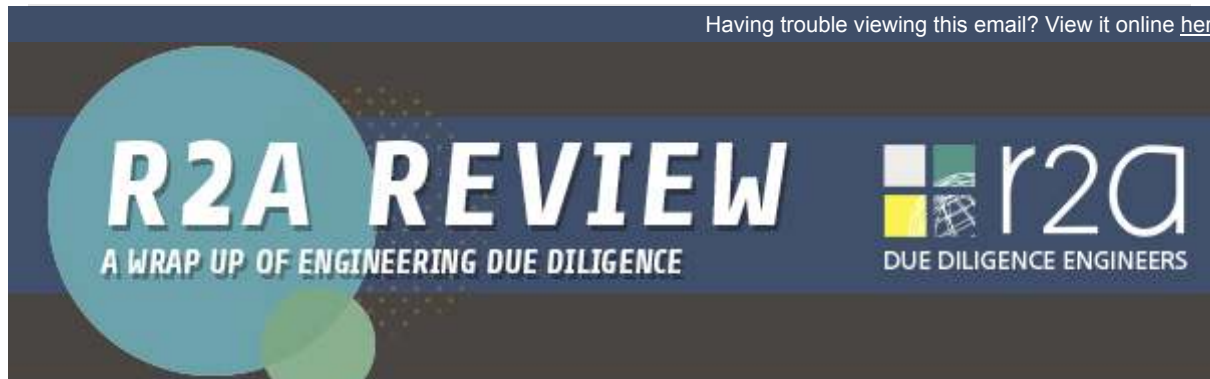


From: Gaye Francis <gaye.francis@r2a.com.au>
Subject: Powerline Bushfire Safety Committee & other news from R2A

Having trouble viewing this email? [View it online here](#)



R2A PRACTICE UPDATE - MARCH 2017

In my recent readings, I came across an interesting article titled *Directors in the gun for climate change risks*. The article calls for directors to demonstrate due care and diligence for future generations under their statutory and common law obligations.

The authors note that *While there's no way to bulletproof a board from climate change litigation, implementing and monitoring appropriate measures to manage climate change risk should reduce the risk of such litigation being successful*. They go on to note the general principles of foreseeability and reasonableness, on which such litigation would presumably focus.

R2A would suggest implementing our Sustainability Due Diligence approach that focuses on environmental and social responsibility risks. Based on due diligence principles of the common law defence against negligence, it clearly and efficiently addresses Director's duties to take reasonable steps to identify and manage critical risks.

R2A Featured Program | Sustainability Due Diligence

— Tim Procter



OUR PRACTICE

R2A is an independent firm of Consulting Engineers specialising in Due Diligence Engineering.

Read the R2A white papers on our primary areas of practice:

[PROJECT DUE DILIGENCE](#)

[OPERATIONS DUE DILIGENCE](#)

[SAFETY DUE DILIGENCE](#)

Or read our [corporate profile](#).

WORKSHOP DATES

R2A is partnering with Engineering Education Australia to deliver a two day Due Diligence workshop.

MELBOURNE	03-04 MAY
WELLINGTON	24-25 MAY
PERTH	21-22 JUN
BRISBANE	23-24 AUG
MELBOURNE	25-26 OCT

Workshop objectives and testimonials can be found [here](#)

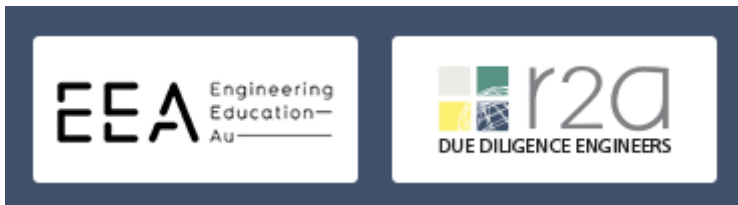


POWERLINE BUSHFIRE SAFETY COMMITTEE

Gaye recently attended the second meeting of the Powerline Bushfire Safety Committee (PBSC) at Energy Safe Victoria (ESV).

As set out in the Committee Charter, the purpose of the PBSC is to provide the Director of Energy Safety (DoES) with comprehensive expert advice to support ESV in its administration of the Electricity Safety (Bushfire Mitigation) Amendment Regulations 2016 (the regulations) and any advice ESV may, in turn, provide government on further policy changes that may be required in the light of initial network experience implementing the regulations.

Read more [here](#).



EEA R2A DUE DILIGENCE WORKSHOP

The next date for the [Engineering Due Diligence workshop](#) held in conjunction with Engineering Education Australia is coming up and is to be held in **Melbourne on the 3rd & 4th of May, 2017**.

This workshop provides decision-makers with the tools to implement due diligence processes ensuring the laws of nature are managed to the satisfaction of the laws of man. This includes project, safety, environmental and financial outcomes.

Book [now](#).



SWINBURNE - INTRODUCTION TO RISK AND DUE

R2A DUE DILIGENCE 10TH EDITION UPDATED 2017 TEXT

The [10th Edition](#) is a text on the complete engineering due diligence approach to risk issues.

It covers tools and techniques typically used by the industry as well as a number of applications and industry case studies.

Purchase or find more information on our website [here](#).

APTO PPE

R2A is proud to be involved with [Apto PPE](#). APTO supply fit for purpose female workwear, including a maternity range.

Apto^x
PERSONAL
PROTECTIVE
EQUIPMENT

CONNECT



[Gaye Francis](#)



[Richard Robinson](#)



[Tim Procter](#)



CONTACT

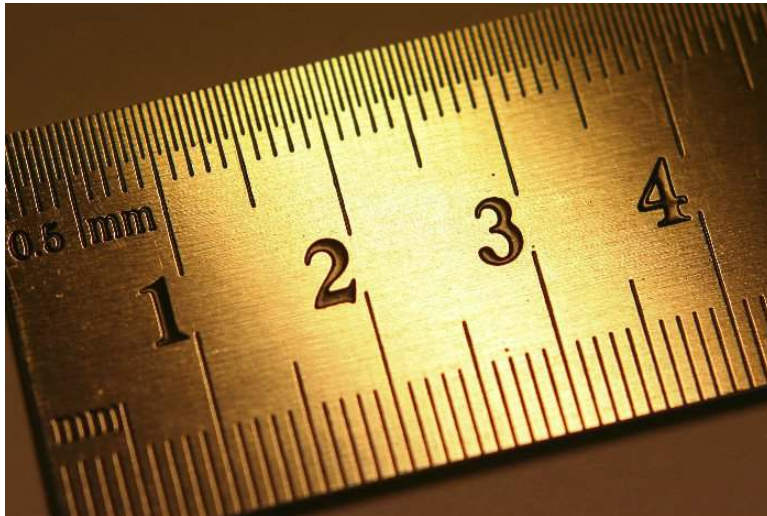
Level 1, 55 Hardware Lane
Melbourne VIC 3000

DILIGENCE

R2A's unit *Introduction to Risk and Due Diligence* at Swinburne University is now a core unit for two postgraduate Master courses, The Master of Professional Engineering and The Master of Construction and Infrastructure Management. With 140 students enrolled in the course, delivery has become a real team effort.

Students gain significant knowledge and skills in procurement and project delivery, resource planning and management, project costing, health and safety, and risk management. They also learn about the environmental, financial, legal, and contractual considerations associated with project-based industries.

Read more [here](#).



ENGINEERING'S GOLDEN RULE

The Golden Rule, or the rule of reciprocity, states that one should treat others as one would wish to be treated. It is an astonishingly widespread maxim, appearing in some form in virtually every major religion and belief system.

As a result, the Golden Rule permeates Australian society, in our courts and parliaments, and our laws and judgments. It is an integral and inalienable part of our social infrastructure.

Read more [here](#).

P +1300 772 333
F +613 9670 6360
W r2a.com.au